



Pack 742 Parent Meeting

St. George's Episcopal Church – Tuesdays 6:30-7:30 pm
2025-2026 Program Year





Welcome & Mission

CUB SCOUT

PACK 742
SUMMERVILLE, SC

Our Mission

“The mission of Scouting America is to prepare young people to make ethical and moral choices over their lifetimes by instilling in them the values of the Scout Oath and Law.”

- *Build Character, Leadership, and Citizenship*
- *Learn by doing: outdoors, service, teamwork*
- *Partner with families to help kids thrive*



Pack 742 at a Glance

- Chartered by St. Georges Episcopal Church (Summerville)
- Family Pack – Boys & Girls, K-5th grade
- Weekly den meetings – Monthly Pack Meetings
- Year-round program: hikes, campouts, service, summer fun



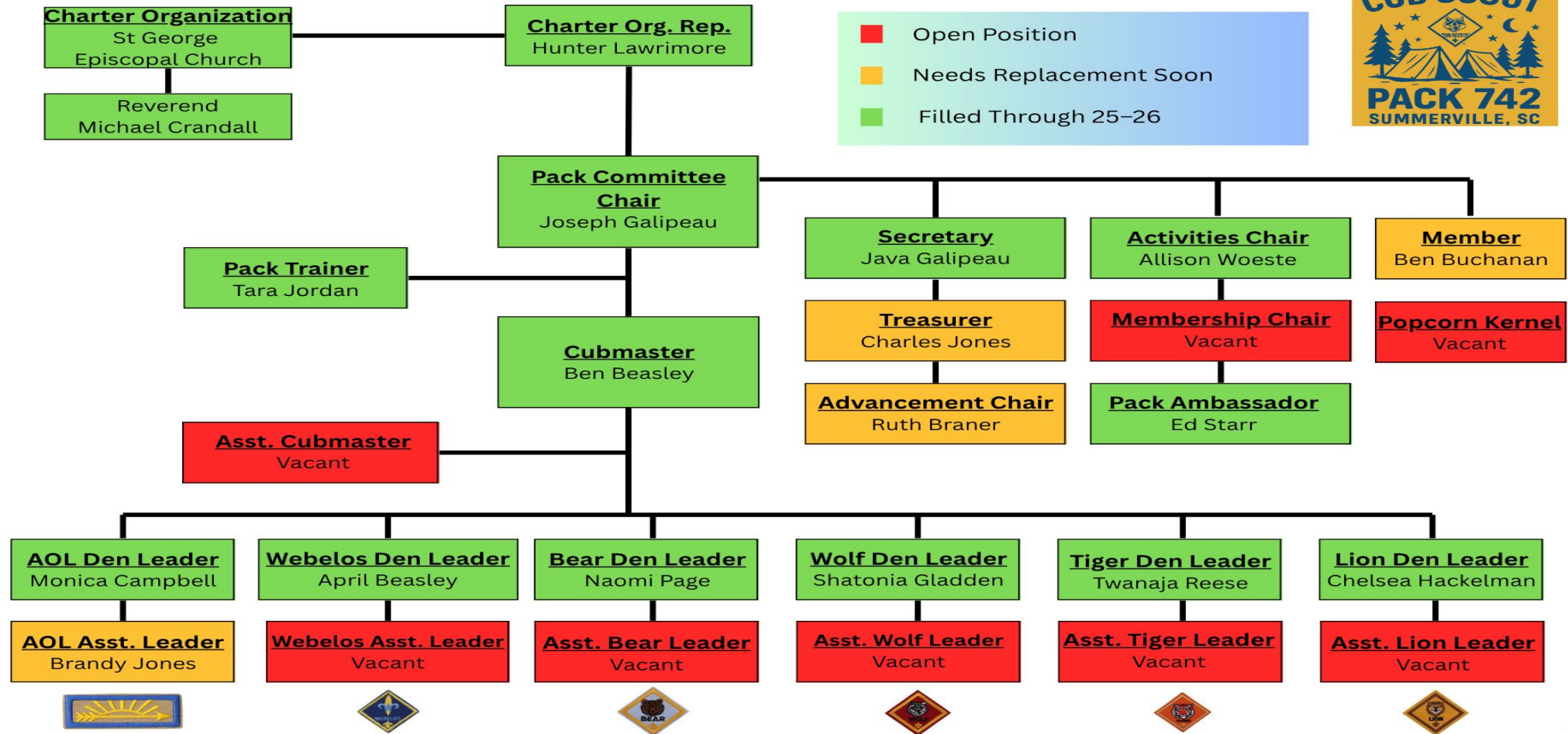
Why Scouting?

- Positive peer group with shared values
- Builds confidence & leadership skills
- Outdoor adventures & hands-on learning
- Lifelong lessons: respect, service, teamwork



Leadership Team

Pack 742 Organization Chart 25-26





Our Program

CUB SCOUT
PACK 742
SUMMERVILLE, SC

What is a Den?

- Small group of Scouts, same grade level
- Led by a Den Leader (with parent support)
- Ranks by grade:
 - Lion (K)
 - Tiger (1st)
 - Wolf (2nd)
 - Bear (3rd)
 - Webelos (4th)
 - Arrow of Light (AOL) (5th)
- Weekly meetings: activities, advancement, fun



What is a Pack?

- All dens come together as one group
- Meet once a month for Pack Meeting
- Celebrate achievements & recognize Scouts
- Family-friendly activities: games, skits, guest speakers, service



Den Meetings

- Held weekly by grade level
- Led by Den Leaders (with parent involvement)
- “Fun with a purpose” – games, crafts, activities
- Scouts work toward advancement
 - Belt Loops
 - Awards



Pack Meetings

- Held once a month for all dens together
- Celebrate Scout achievements & awards
- Skits, songs, games, and fun activities
- Families join in – community feel



Year-Round Scouting

- Weekly meetings during the school year
- Monthly hikes, campouts, and service projects
- Summer program: outings, day camps, family activities
- Keeps Scouts active, engaged, and learning all year



A photograph of a baseball game at night. The field is covered in white streamers thrown by fans. In the foreground, several people are seen from behind, sitting in green stadium seats and throwing streamers. A man in a yellow shirt and tan shorts is on the left, and a woman in a grey shirt and jeans is on the right. The field is lit up, and a scoreboard in the background shows "DOGS WIN".

Pack Calendar

Annual Planning

- Full year-round calendar planned in advance
- Mix of meetings, hikes, campouts, and service projects
- Special events: Blue & Gold, Pinewood Derby, Graduation
- Keeps families informed & Scouts engaged



Special Events

- Pinewood Derby – design, build, and race cars
- Blue & Gold Banquet – celebrate Scouting's birthday
- Graduation & Crossover – Scouts advance to the next rank
- Traditions that bring families together each year



Outdoor Adventures

- Monthly hikes – explore local parks & trails
 - Hiking Club
- Pack campouts – Family-friendly overnight fun
 - Santee State Park – Pow Wow – Drive In – River Rats
- Council Campouts
 - Fall & Spring Cub Family, Cub Haunted
- Cub Resident Camps
 - Camp Rainey Mountain!!!!
- *Builds outdoor skills, confidence, and friendships*



Service Projects

- MLK Day of Service – giving back to the community
- Pumpkin Unloading – supporting St. George's
- Memorial Day Flags – honor veterans
- Wreaths Across America – honor veterans
- Firefighters Baked Goods Delivery – support first responders
- *Teaches Scouts the value of citizenship & service*



Costs & Dues



National Registration

- Annual fee: \$119 per Scout
- Paid directly to Scouting America
- Covers: Membership, insurance, national program support
- Renewed one year from the registration date yearly



Pack Dues

- Annual Dues: \$100 per Scout
- Split into two \$50 payments (Oct & Feb)
- Supports Pack operations locally
- Keeps the program running smoothly year-round



What Dues Cover

- Awards & advancement materials
- Leader training & resources
- Pack meeting supplies & activities
- Den program support
- Special events & service projects
- Campership assistance for families in need



Optional Costs

- Uniforms (\$75-\$125 depending on rank)
- Camping fees (around \$10 per person, per event)
- Council events (Cub Family, Cub Haunted, Safari, etc.)
- Summer camps (Day Camp, Resident Camp)
- Occasional outside activities (museum tours, entrance fees, etc)





Fundraising & Popcorn

CUB SCOUT
PACK 702
SCOUTS BSA
TROOP 742
Coastal Shores Baptist Church

CARAMEL POPCORN 12 PACKAGES
POPCORN 12 PACKAGES
KETTLE CORN 12 PACKAGES
CHEDDAR POPCORN 12 PACKAGES



Why Fundraising Matters

- Keeps scouting affordable for all families
- Offsets Pack costs (awards, activities, events)
- Builds life skills: confidence, communication, responsibility
- Scouts learn to earn their way – not just pay to play



Popcorn is Our Main Fundraiser

- Runs August 29th – end of November each year
 - We as a pack try to be done mid-October
- Scouts sell online, at storefronts, and to family & friends
- Also accept Heroes & Helper donations (supports military, first responders, food banks)
- Trail's End app makes sales simple & secure



Participation Goal

- Each Scout's goal: \$600 in sales
- Covers cost of the program for the year
- Meets Council incentive: FREE Stingrays Hockey ticket
- Teaches Scouts to set & reach meaningful goals



Pack Incentives

- \$600 – Stingrays Ticket
- \$936 – Dues Paid (\$100 value)
- \$1020 – Scout Shop Gift Card (\$25 value)
- \$1420 – Recharter Covered (\$119 value)
- \$1571 – Cub Family Weekend (\$45 value)
- \$2058 – Camp Swampy Day Camp (\$145 value)
- \$2647 – Cub Resident Overnight Camp (\$175 value)



Trail's End Rewards

- Earn brand-name egift cards & prepaid cards
- Choices include Amazon, Target, Walmart, Mastercard, and more
- Points system
 - 1.75 pts per \$1 Heroes & Helpers (credit/online)
 - 1.25 pts per \$1 credit card sales
 - 1.0 pt per \$1 cash sales
- Scouts redeem points for the highest reward tier earned



How to Sell

- Storefront Shifts – high-traffic locations, great visibility
 - Lowe's Home Improvement (Dorchester Rd, Northwoods, Goose Creek)
 - Lowe's Foods (Dorchester Rd)
 - Fridays, Saturdays, Sundays starting August 29th
- Online Sales – share link or app with family & friends
- Heroes & Helpers donations – support military & first responders
- Use the Trail's End app – easy payments, safe & secure



Family Buyout Option

- Alternative if unable to participate in popcorn sales
- Buyout amount set annually by Pack Committee
 - \$250 prorated based on % of \$600 sold
 - Due the end of October on top of Pack Dues
- Covers your Scout's share of program costs
- Fundraising is still encouraged





Expectations & Culture

Uniform Policy

- Field Uniform (Class A): official shirt, neckerchief, belt
 - Purchased at the Scout Shop
- Activity Uniform (Class B): Pack T-shirt for casual/outdoor events
 - New shirt order being placed early September (Free scout shirt)
- Pack 742 is a “belt-up” unit – pants, socks, hats optional
- Scouts wear Field Uniform at Pack Meetings unless told otherwise



Not a Drop-Off Program

- Lions & Tigers: Parent/guardian (Akela) must stay & participate
- Wolves & above: Parent/guardian expected to remain on site
- Creates a safe, supportive environment
- Scouting is a family program – involvement matters
 - You and your scout will get out of scouting what you put into scouting



Code of Conduct

- Scouts live by the Scout Oath & Law
- Show respect, honesty, and responsibility
- Parents model positive behavior & support the program
- Bullying or disrespect is not tolerated
- Focus: inclusive, welcoming environment for all



Safety First

- All events follow the Guide to Safe Scouting
- At least one trained adult in CPR/First Aid present
- Parents must complete Safeguarding Youth Training (annual)
- Medical forms required for all Scouts, Siblings, Leaders, and Parents that participate with the pack regularly
- Safety briefings given before outings



Communication & Parent Role

How We Communicate

- Band App – required for at least one parent per family
 - All communication
 - Main page posts
 - Full calendar of events
 - All Band posts & calendar events link back to our website for more details
- Pack 742 Website – event pages, rsvp's, news & updates
- Leaders maintain open communication with parents



Parent Involvement

- Parents are encouraged to attend den & pack meetings
- Volunteering keeps the Pack strong & fun
- Opportunities big & small – events, committees, den support
- Scouting succeeds when families engage together



Leadership Opportunities

- Serve as a Den Leader or Assistant
- Join the Pack Committee (planning & support)
- Help coordinate special events & activities
- Chare your skills or talents as a guest speaker



Every Parent Has a Place

- From big roles to small tasks, all help matters
- Many hands make the program stronger
- Even occasional volunteering makes a difference
- Scouting is best when families share the journey





Closing & Call to Action

CUB SCOUT

PACK 742
SUMMERVILLE, SC

Scouting is a Family Journey

- Memories made through shared adventures
- Scouts grow in confidence, skills, and friendships
- Families connect with a community of support
- Together we build something bigger than ourselves



Next Steps

- Complete registration & Medical Forms
- Submit national fee
- Get your scout's uniform & handbook (optional)
- Participate in the Popcorn Kickoff
- Stay connected through Band & Website



Thank You!!

- We're glad you're part of Pack 742
- Together we make Scouting possible
- Questions? We're here to help

